



Fortress Secure Client

FEATURES & BENEFITS

Simple and secure wired or wireless connectivity

The Fortress Secure Client provides the strongest commercially available security for the clients on your WLAN. Fortress Secure Client protects the authentication and connection of WLAN users and devices, ensuring that only authorized users connect, that login credentials are not compromised, and that both network and data privacy will be maintained over the wireless link

Increase productivity

The Fortress Secure Client allows you to extend the availability of applications, devices and data throughout your enterprise, creating an immediate return on investment. The Fortress Secure Client provides for roaming across subnets and single sign-on so that users can connect to the network quickly and easily.

Easy to deploy and manage

The Fortress Secure Client offers exceptionally low total cost of ownership. With its support for remote installation, automatic configuration and unrivaled multi-platform, multi-vendor compatibility, it is as easy to deploy as it is to manage and maintain.

Support for multiple applications

The small footprint and transparent operation of the Fortress Secure Client make it suitable for use in deployable networks, front offices, retail space, warehouses or factory floors. Whether the end device is a ruggedized laptop in a battlefield or a legacy DOS device in warehouse, Fortress Secure Client offers the same high assurance security.

Flexibility & Security

Fortress Secure Client provides protection for a broad range of devices used in:

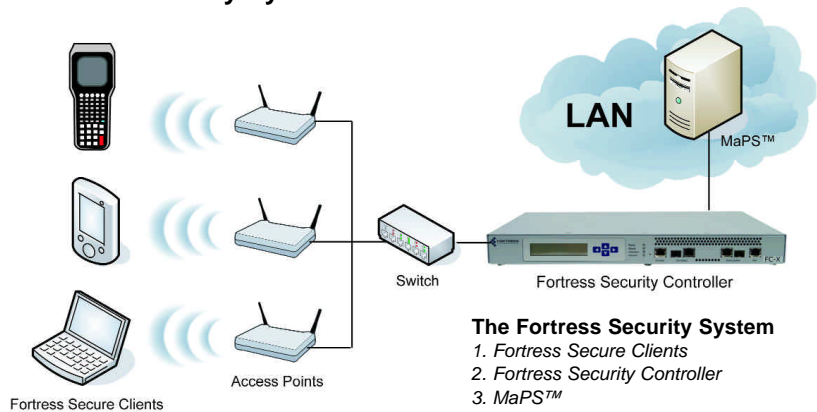
- Deployable networks
- Fixed wireless
- Mobile edge applications
- Office WLAN

Fortress Technologies makes wireless networking simple, secure, and interoperable.

Deploying effective applications requires the instant access afforded by mobility. Adhering to rigorous policies requires proven security. Only Fortress allows you to do both with confidence and simplicity.

The Fortress Security System is designed to secure wireless networks, devices and users regardless of the network topology or wireless standard being used. Whether the application involves fixed wireless, deployable networks, office WLAN or mobile edge computing, Fortress provides a comprehensive security solution with the broadest device support in the industry.

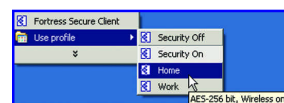
The Fortress Security System



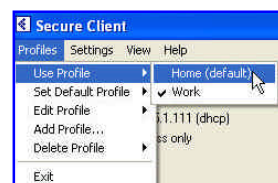
The Fortress Security System

1. Fortress Secure Clients
2. Fortress Security Controller
3. MaPS™

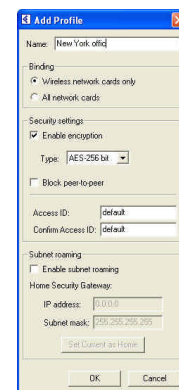
Fortress Secure Clients are security agents that provide the same level of high assurance security across all client devices. The Fortress Secure Client enables devices to securely communicate with the network and peer-to-peer. When installed, the Fortress Secure Client creates a unique device identifier so that only authorized devices are allowed access to the network. The Fortress Secure Client runs on PCs, tablets, PDAs, and industrial devices running Windows, Windows CE, Windows Mobile, Linux, Palm (Tungsten C), DOS, or Mac OS X (Tiger and Panther).



> Easy profile selection



> Edit and create profiles



> Location specific attributes

Fortress Secure Client

Fortress Technologies allows you to secure and control all the components of your wireless network; regardless of infrastructure, vendor or evolving technologies.

Fortress Security Architecture SecureEdge The role of the network edge is to provide fast, flexible access to devices and users. In the wireless world, this means products that combine access and security features in an integrated, deployable form factor that can work in mobile, ad-hoc, unstructured, or remote applications. The SecureEdge series of products from Fortress Technologies protects access to your network at the edge. The SecureEdge family includes AF series Security Gateways and FC series Security Controllers and SecureEdge sensors.

SecureCore The network core provides optimal bandwidth and network services to the edge by consolidating traffic streams from edge devices and simplifying topologies across the network infrastructure. In today's network environments, the proliferation of wireless access and constant demands for increased bandwidth makes this especially critical. The SecureCore series of high performance controllers provides the required bandwidth, scalability, redundancy, and multi-layered security to the devices at the edge of your network. The SecureCore family includes the FC-1500 Security Controller.

SecureControl: In order to effectively and cost-efficiently run a secure wireless network, it is critical to be able to centrally manage, monitor, control and enforce policies. The SecureControl series of products from Fortress Technologies allows you to configure, implement and monitor policies on your network. The SecureControl family includes Fortress Management and Policy Server (MaPS) and Fortress Wireless Monitoring System (WMS).

SecureConnect: Today's wireless networks provide a convenient mode of access to a wide array of devices. Whether it is a Windows-based PC, PDA, Mac, Linux or proprietary device, Fortress's highly flexible and interoperable solutions provide the means to securely connect these clients to your wireless network. The SecureConnect series of products from Fortress Technologies is a suite of software agents and devices that provide security services and ensure the identity of users on your network. The SecureConnect family includes Fortress Secure Clients.

SECURE CLIENT SPECIFICATIONS

FEATURES AND PERFORMANCE

- encryption**
 - AES 128, 192, 256, DES, 3DES
- multi-factor authentication options**
 - network, device, user
- user authentication options**
 - RADIUS, LDAP*, Active Directory*, MaPS*, RSA SecurID*
- user profiles**
 - location-specific configuration settings can be saved
- profile short cuts**
 - for easy switching between locations
- single sign-on**
 - integrated authentication prompts
- roaming**
 - supports secure roaming across Gateways and subnets
- traffic prioritization**
 - 5 level Class of Service*
- manageability**
 - Client GUI or Fortress MaPS
- certifications**
 - FIPS 140-2 (NIST), SPOCK (DoD), JITC (DISA)
- warranty**
 - Ships with 1 year of maintenance and support
- operating systems**
 - Windows, Windows CE, Windows Mobile, Linux, Palm (Tungsten C), DOS, or Apple's Mac OSX

*when used with Fortress Management and Policy Server (MaPS)

Minimum System Requirements

	Microsoft Windows XP	Microsoft Windows2000
Service Pack	• Service Pack 2	• Service Pack 4
Processor	• Pentium, 233 MHz	• Pentium, 166 MHz
RAM	• 128 MB	• 64 MB
Available Storage Space	• 10 MB above minimum operating system requirements.	
Communications	• network interface card (NIC)	
Peripherals	• CD-ROM drive (or network access to the installation files on a shared network directory)	

Windows CE

Communications	• Functioning network interface
Peripherals	• Access to the installation files (network or local drive)
Versions	• CE 3.0, CE.NET, PowerPC 2002, 2003, Mobile 2003, Embedded
Processor	• Strong Arm, XScale PXA250, Intel x86
RAM	• 16 MB
Available Storage Space	• 1 MB

© 2006 Fortress Technologies Inc. All rights reserved.

Visit www.fortresstech.com
Fortress Technologies Inc.
4023 Tampa Road, Suite 2000
Oldsmar, FL 34677
Phone: 813.288.7388 or
1.888.4PRIVACY (477-4822)

